

Consumers

Board Officers:
President - Vice-President – Treasurer - Secretary

Board Committees
Finance/Audit - Program - Personnel

Chief Executive Officer
Kenyatta Stephens

Planning and Development - Certified Community Behavioral Health Clinic

Director of Administrative Operations/Executive Assistant
Cynthia McDaniel

Executive Assistant /Fund Development Specialist
Tangela Devezin

Chief Operating Officer
Dr. LaTonya Shelton

Manager of Communications & Project Management
Tayler Thompson

Corporate Compliance Officer
Monica Britton

Chief Financial Officer
Scott Kline

Mobile Wellness & Health

Family Preservation/Juvenile Justice Services

Fiduciary Services

Fiscal Management

In School Services

Prevention Services

Risk Management

HR Management

Community Based Services

Substance Abuse

Behavioral Health Services

Early Childhood

Suicide Prevention JFS

Executive Vice President
Nicole McKinney

IT & Facility Management
Chuck Dulin

Community Engagement

Vice President of Quality & Performance Improvement
Kimberly O’Neal

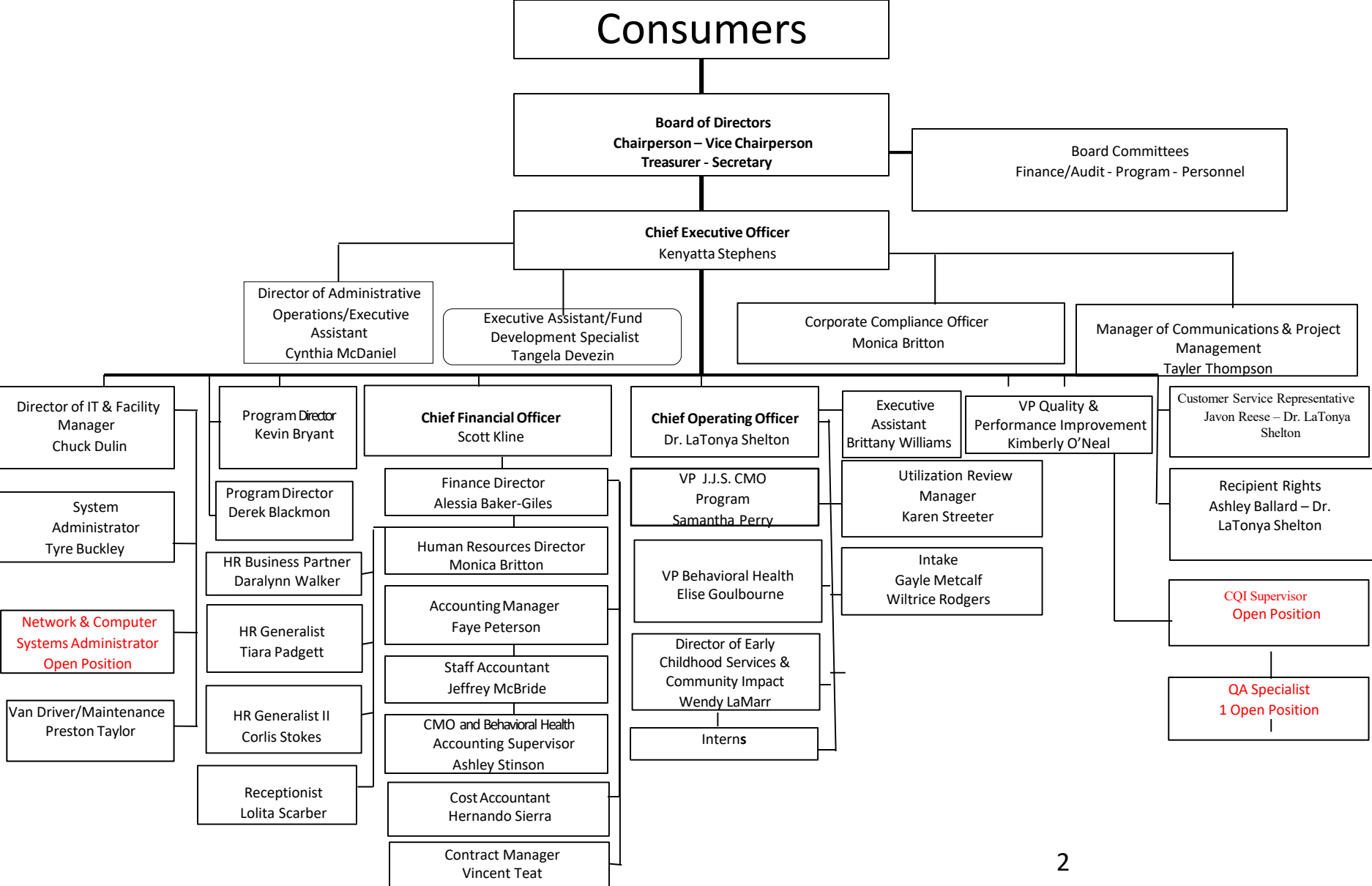
Positive Youth Development

Recipient Rights
Ashley Ballard – Dr. La Tonya Shelton

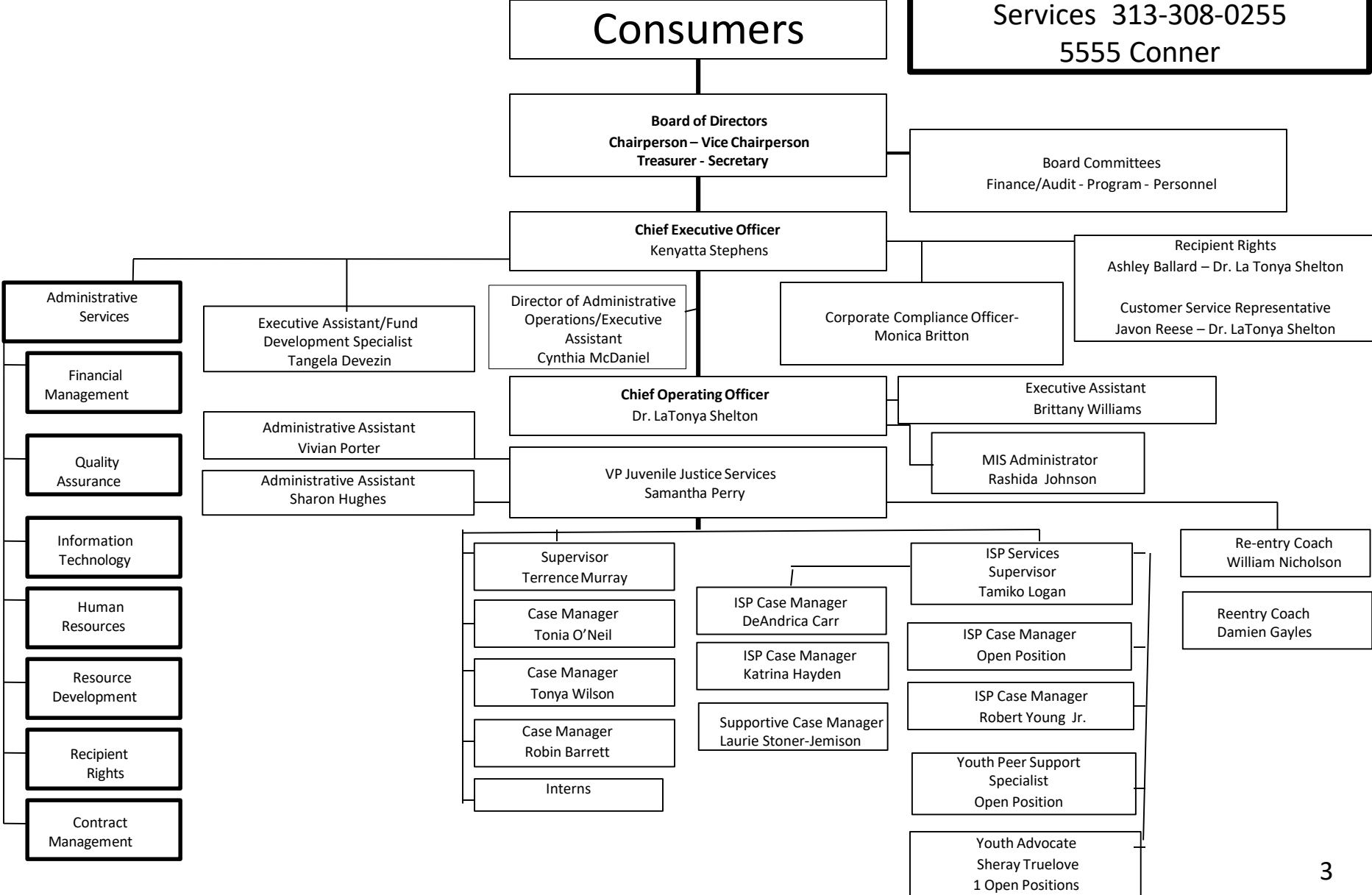
Customer Service Representative
Javon Reese – Dr. LaTonya Shelton

Black Family Development, Inc.
Agency Org Chart
Updated 7/22, 4/23, 8/23, 4/24, 8/24

Organizational Chart Summary



**Family Preservation
Juvenile Justice - Care
Management Organization**
Services 313-308-0255
5555 Conner



Behavioral Health
Org. Chart
313-758-0150
Main Office & 5555 Conner

Consumers

Board of Directors
 Chairperson – Vice Chairperson
 Treasurer - Secretary

Board Committees
 Finance/Audit - Program - Personnel

Chief Executive Officer
 Kenyatta Stephens

Recipient Rights
 Ashley Ballard – Dr. LaTonya Shelton

Customer Service Representative
 Javon Reese – Dr. La Tonya Shelton

Corporate Compliance – Monica Britton
 Director of Administrative Operations/Executive
 Assistant - Cynthia McDaniel
 Executive Assistant/Fund Development Specialist
 Tangela Devezin

Chief Operating Officer
 Dr. LaTonya Shelton

Executive Assistant
 Brittany Williams

Vice President Behavioral Health
 Elise Goulbourne

Psychiatrists:
 Dr. Lisa Fuller
 Dr. Rosalind Spells

Behavioral Health Director STAGES – DWIHN
 Sonya Shelman

Wraparound – PMTO – SED
 Waiver Supervisor
 Khalea Foy

School Based Services – School Success and MH Medicaid School Based

Medical Billing Specialist-
 Gloria Smith

Data Specialist/Administrative
 Bria Naylor

Community Team
 Community Stakeholders

Supervisor
 Se'ara Davis

Admin Assistant
 Marion Jones

Supervisor
 Margeutta Turner

Therapist
 Anquinette Mosley

Case Manager
 Paula Armstrong

Administrative
 Assistant - Lisa Atkins

Therapist
 Satira Collier

Prevention Counselor
 Yasmine Bates

Therapist
 Amber Kilanowski

Prevention Counselor
 Juana Scandrick

Clinician
 Tracy Tayler

Co-Occurring
 Therapist
 Danayzha Williams

Child & Family Team
 Natural & Formal Supports

Therapist
 Tylia Green

Prevention Counselor
 Velda Hunter

Therapist
 Tamitha Allman

Prevention Counselor
 Open Position

Interns

Program Supervisor
 Kim Alabi-Isama

Wraparound
 Facilitator
 Exa Boswell Start 8/19/24

Parent
 Support Partner
 Robert
 Pettaway Jr.

Prevention Counselor
 Open Position

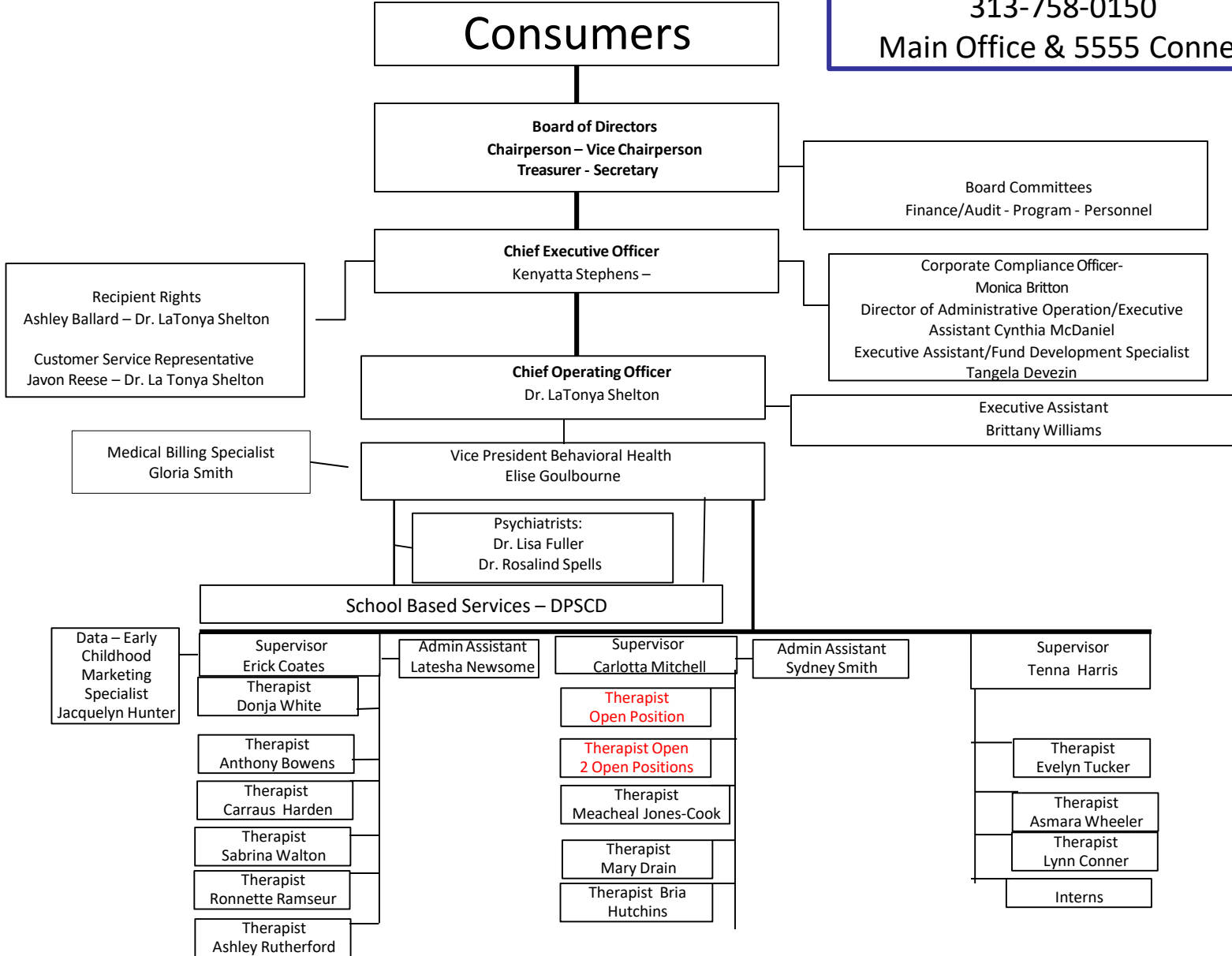
Therapist
 Michaela
 Cosand

Interns

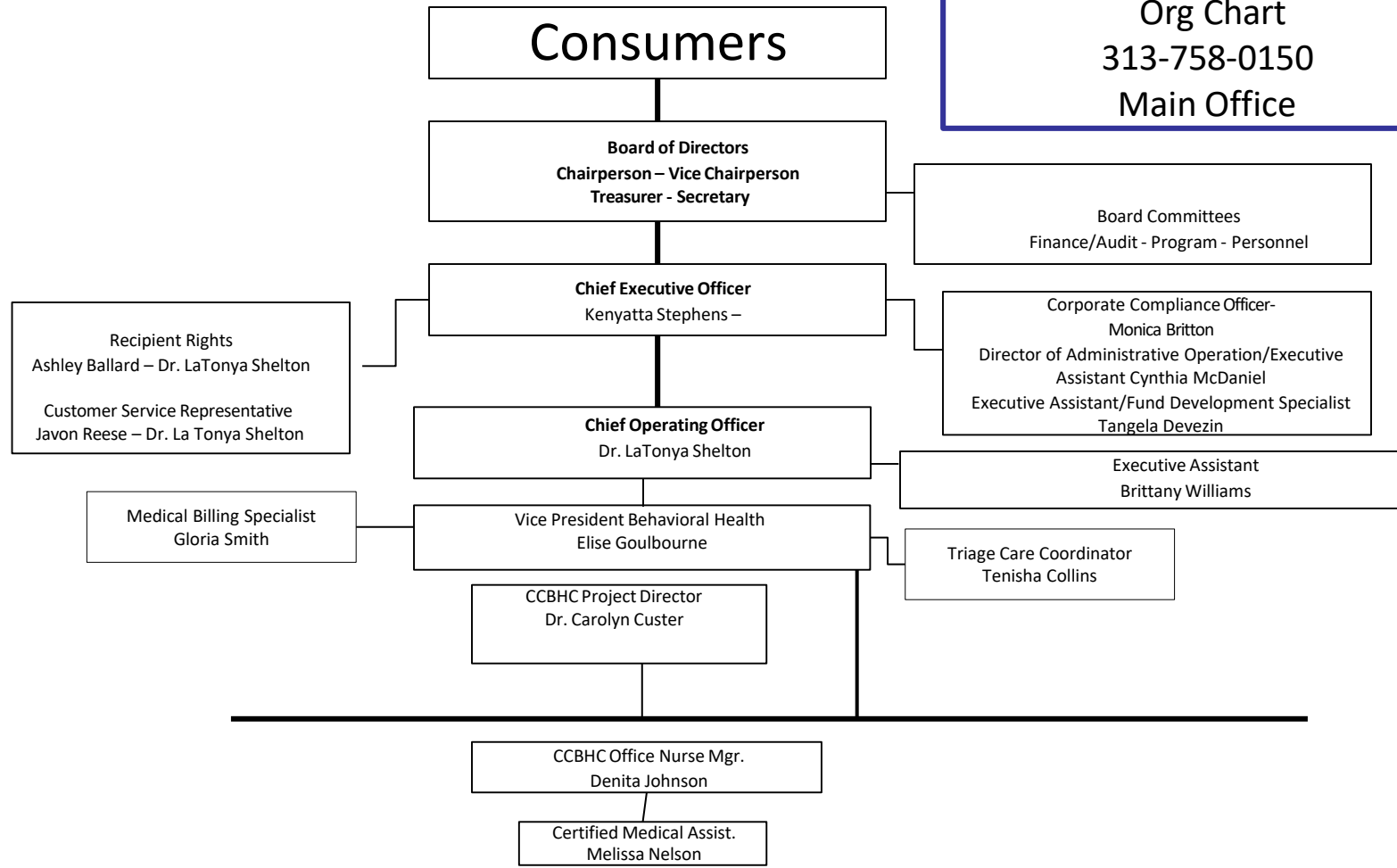
Wraparound Facilitator
 Terena Rice

Parent and Student
 Support Counselor
 Zenobia Awada

**Behavioral Health
Continued (DPSCD)
Org Chart
313-758-0150
Main Office & 5555 Conner**



**Certified Community
 Behavioral Health Clinic
 (CCBHC)
 Org Chart
 313-758-0150
 Main Office**



Prevention
 YAP, United Way, Positive Youth
 Development, Family Preservation
 and Building Foundations
 313-758-0150 Main Office

Consumers

Board of Directors
 Chairperson – Vice Chairperson
 Treasurer - Secretary

Board Committees
 Finance/Audit - Program - Personnel

Recipient Rights
 Ashley Ballard – Dr. LaTonya Shelton

Customer Service Representative
 Javon Reese – Dr. LaTonya Shelton

Chief Executive Officer
 Kenyatta Stephens

Corporate Compliance Officer
 Monica Britton
 Director of Administrative Operations/Executive Assistant
 Cynthia McDaniel
 Executive Assistant/Fund Development Specialist
 Tangela Devezin

Chief Operating Officer
 Dr. LaTonya Shelton

Administrative Assistant
 Sharon Hughes

Vice President Juvenile Justice
 Samantha Perry

Executive Assistant
 Brittany Williams

United Way Family Connections &
 Building Foundations
 Program Manager
 Cynthia Williams

Y.A.P.
 UW Family Connections
 Program Mgr.
 Cynthia Williams

UW Counselor – Cornel Lynch Jr.

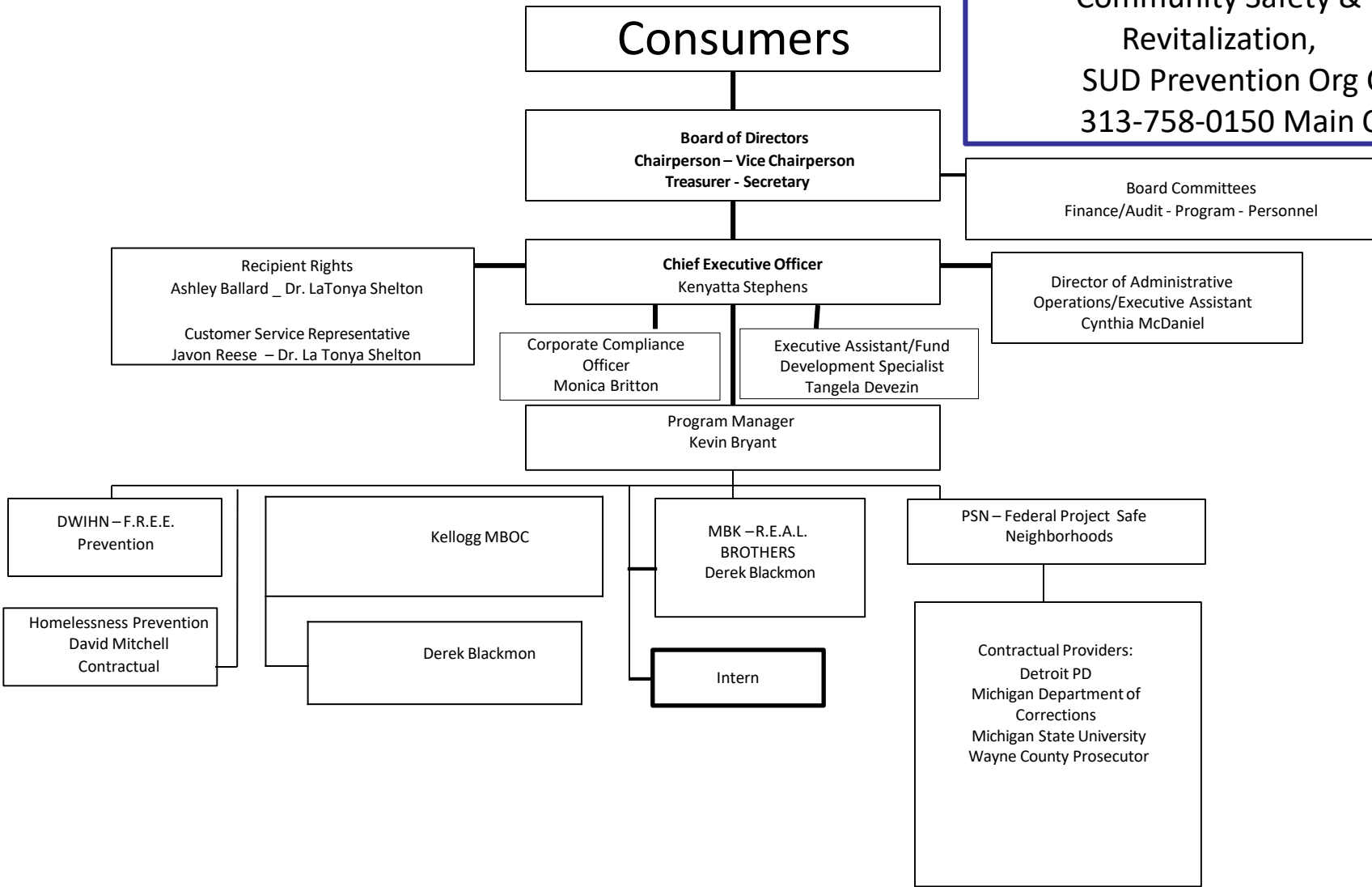
YAP Counselor
 David Moseley

Interns

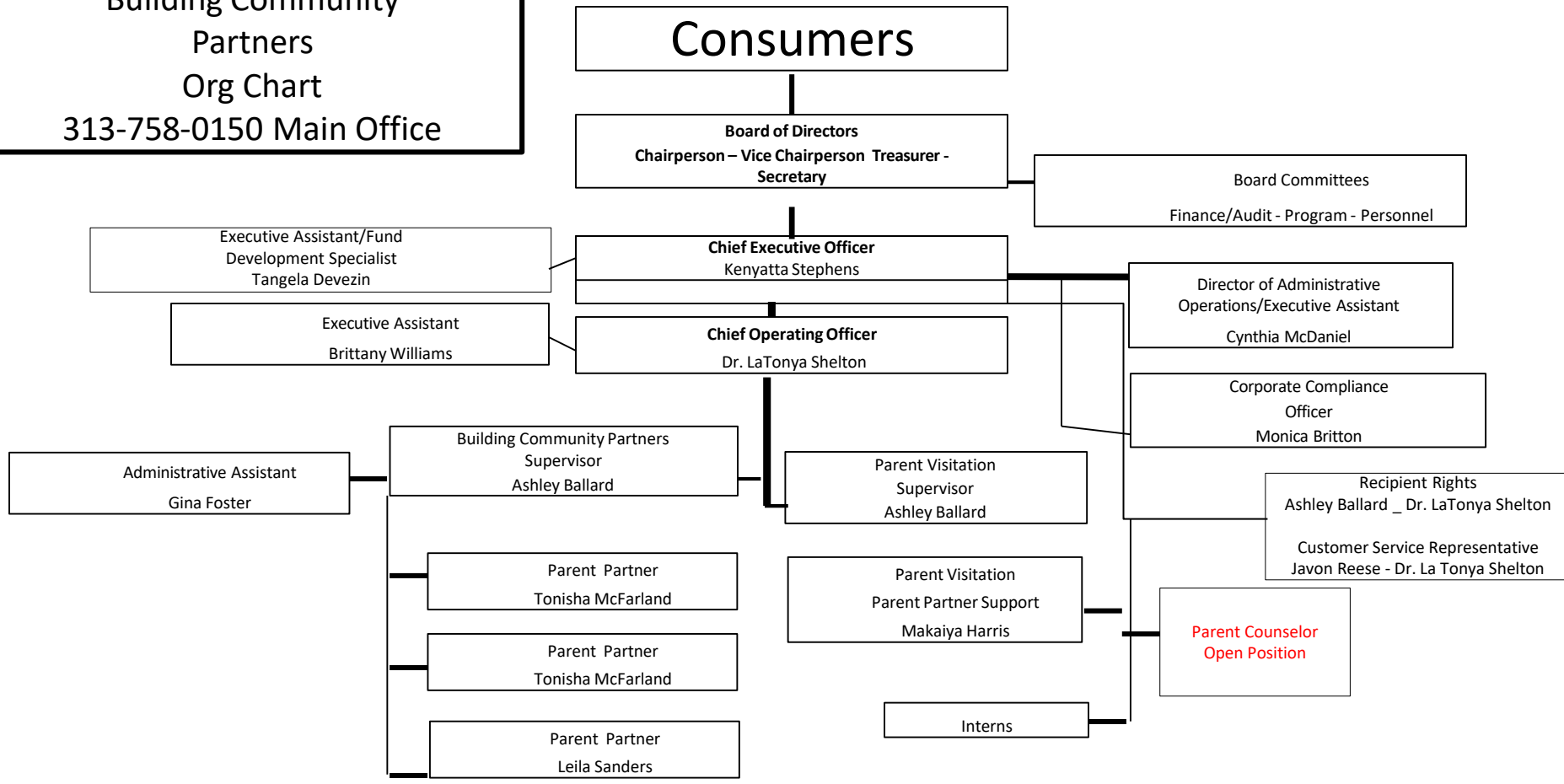
YAP Counselor
 Charone Carter

Intern

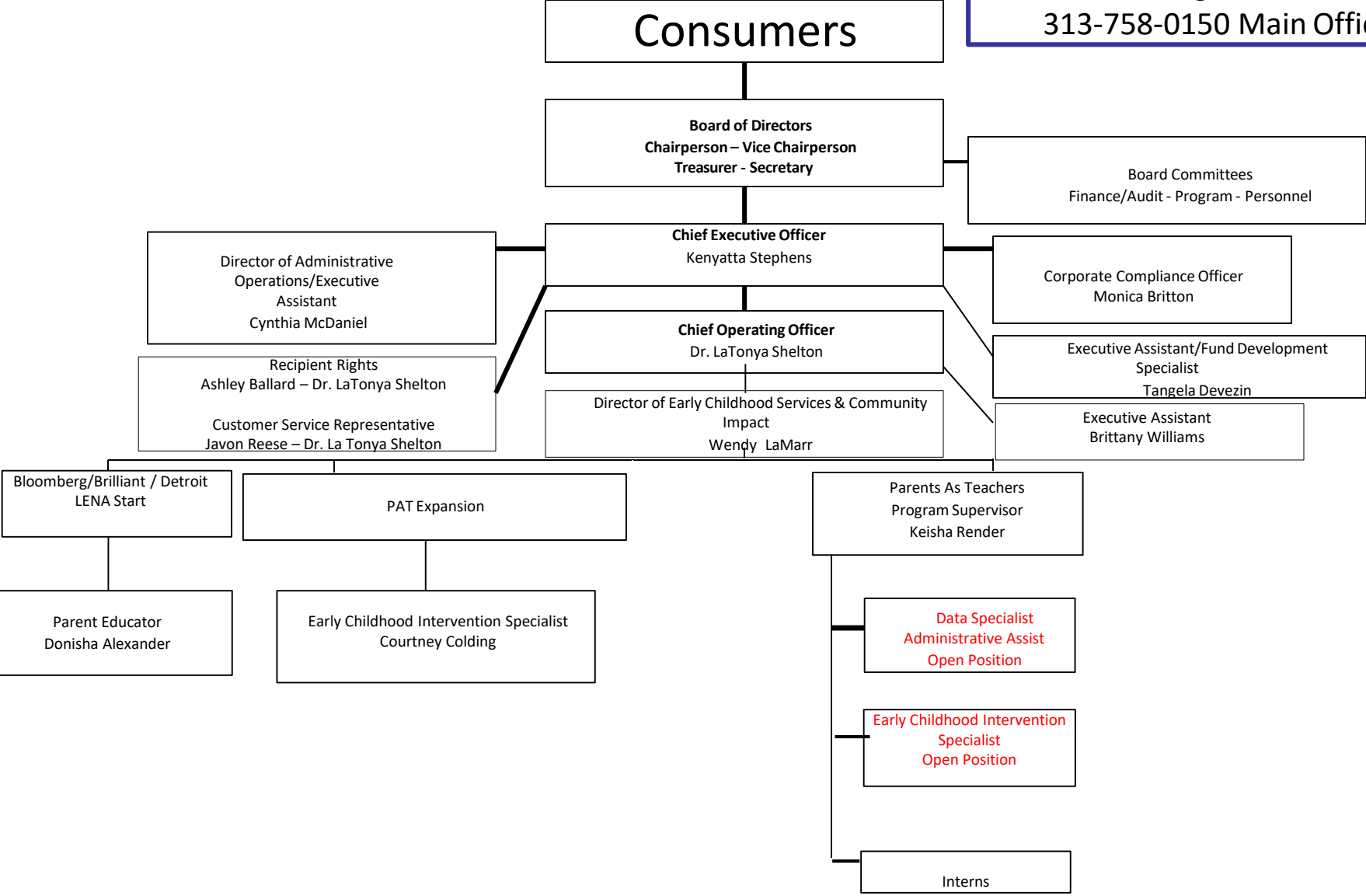
Prevention
 Community Relations:
 Homeless Prevention,
 Community Safety &
 Revitalization,
 SUD Prevention Org Chart
 313-758-0150 Main Office



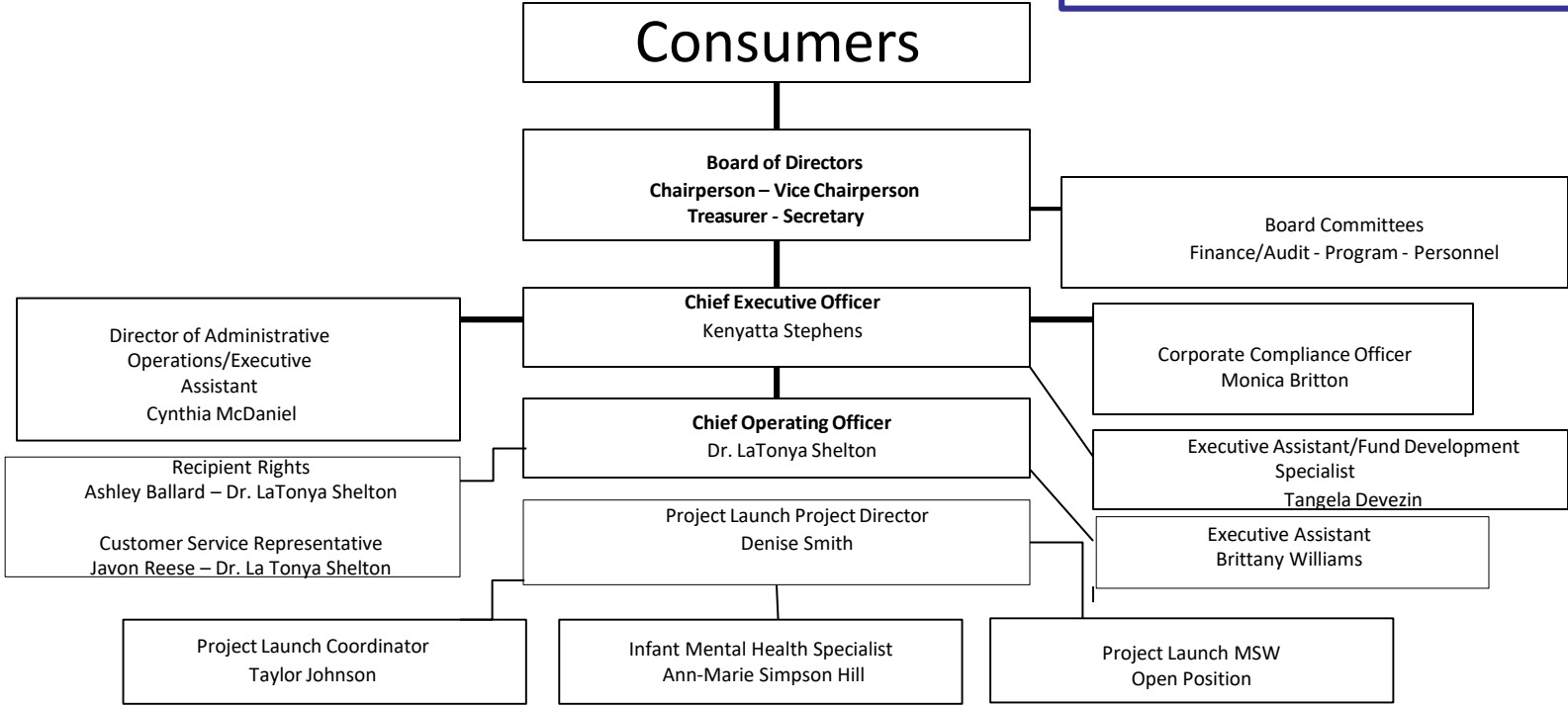
Family Preservation
 Parent Visitation,
 Building Community
 Partners
 Org Chart
 313-758-0150 Main Office



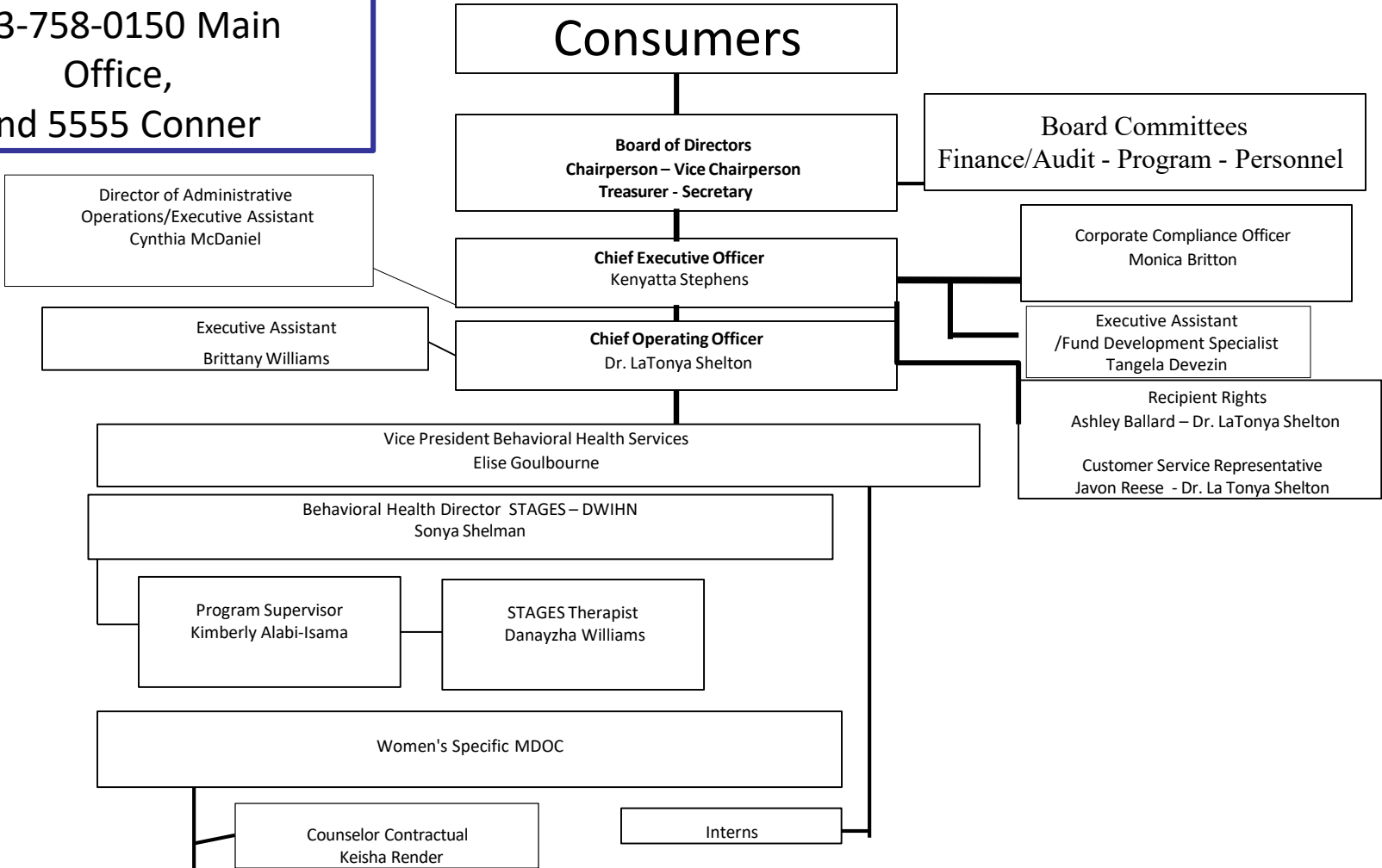
**Prevention Early Learning
Programs**
313-758-0150 Main Office



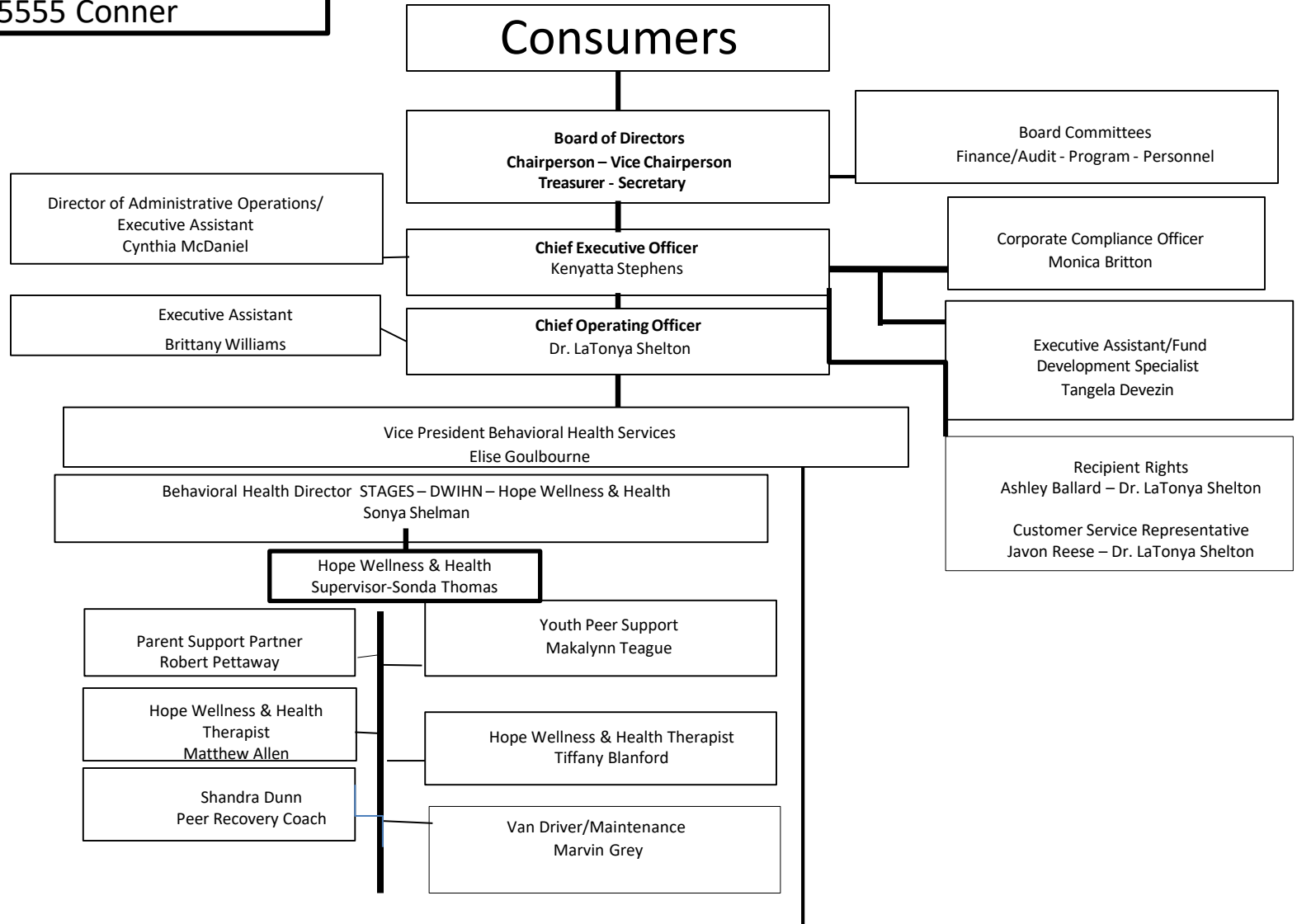
Prevention Project Launch
 313-308-0255 5555 Conner



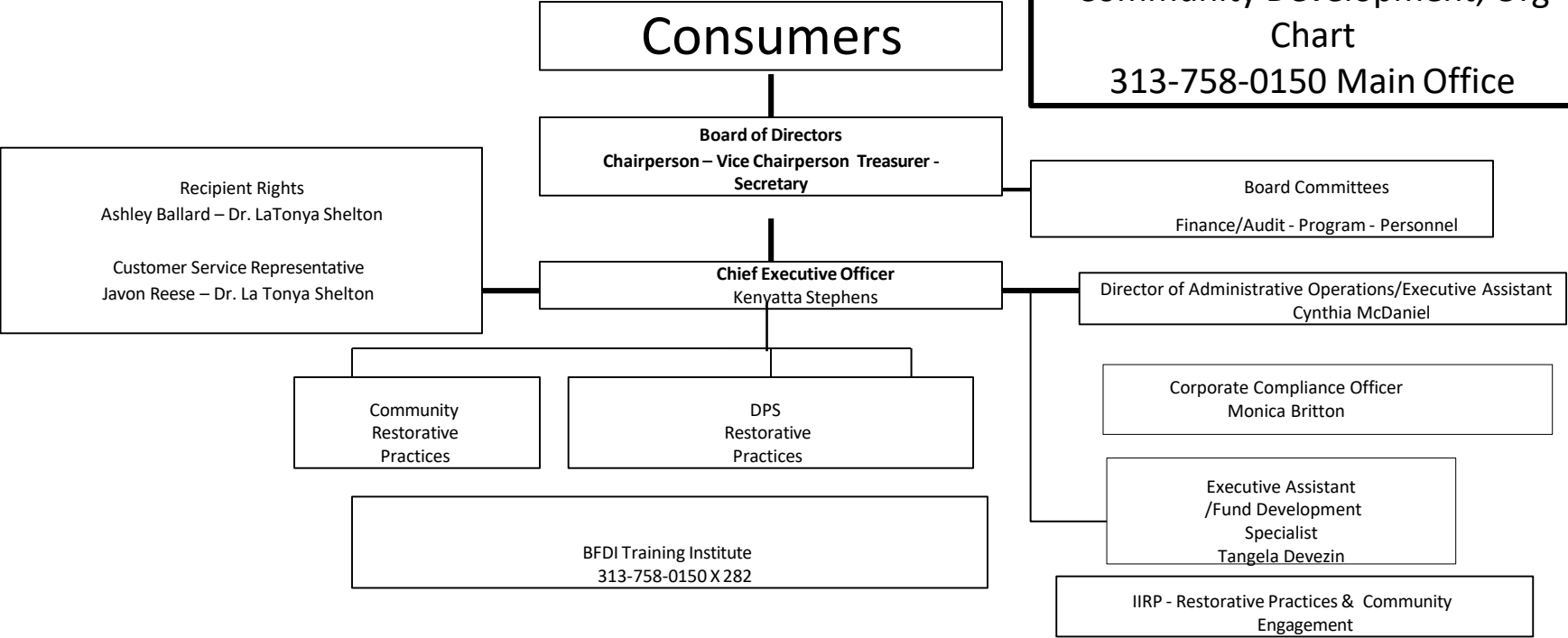
SUD
Org Chart
 313-758-0150 Main
 Office,
 and 5555 Conner



Hope Wellness & Health
 Org Chart 313-308-0255
 5555 Conner



Prevention - Restorative Practices, In School, YMCA and Community Development, Org Chart
313-758-0150 Main Office



Prevention – Suicide Prevention
JFS Org Chart
313-758-0150 Main Office

